

The Chemistry of:

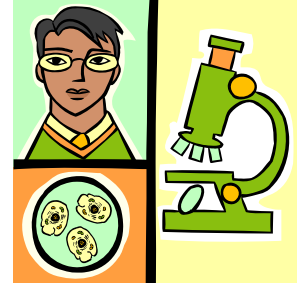
Dyslexia

Attention problems

and

Sensory Processing Problems

by Dianne Craft, MA, Certified Natural Health Professional



I. Characteristics:

A. Dyslexia

1. Reading 2 yrs. below level
2. Can't remember phonics sounds
3. Reverses words when reading

B. Attention Problems

1. Needs parent to sit next to him to finish work
2. Disorganized in all things
3. Forgets previously learned material

C. Sensory Integration Problems, "SI"

1. Auditory
 - a. Sensitive to loud noises
 - b. Is bothered by a big group
2. Taste
 - a. Food textures bother them
 - b. Won't eat meat
 - c. Very selective eater
3. Touch
 - a. Clothing tags bother them
 - b. Chews on clothes
 - c. Likes only soft clothing
 - d. Socks have to have no seam

II. *Common Chemistry Imbalances:*

A. Immune system upset

1. Allergies (*dairy and wheat most common*)
2. Thyroid problems

B. Nervous system upset

1. Anxiety
2. Sleep problems

C. Essential Fatty Acid Deficiency

1. *Dyslexia, ADHD and Dyspraxia: The LCP Solution, Dr. Jacqueline Stordy*
2. Fish Oil (large amounts)

D. Subclinical Anemia

1. 84% children with ADD
2. Natual Liver capsules clears this up quickly

E. Mineral imbalance

1. Magnesium is Nature's Tranquilizer
2. Mineral Rich calms many children

F. Yeast/Fungus Overgrowth

1. Primadophilus and Grapefruitseed Extract 3x/day
2. Reduce sugar and carbs (especially breakfast)

☺ ☺ ☺ Many parents report that by following the step by step supplement program as outlined in the 'Biology of Behavior' CD set, that they see many behavioral and focusing changes in their children. The enclosed Study Guide gives amounts, brands, resources, etc., and is easy to follow. This is especially helpful for a child with 'SI' characteristics, moodiness, meltdowns, focusing problems and inconsistent performance! Parents often say that they have a 'different child' to work with, after following this program.

CD set available at www.diannecraft.org